



# 2023

AFTERMARKET CATALOG

# ROSWELL<sup>®</sup>

## OFFROAD

FIREFLY CAGE SPEAKER

6

OFFROAD AMPLIFIERS

8

DIGITAL MEDIA RECEIVERS

10

SPEAKERS & SUBWOOFERS

11

OFFROAD PACKAGES

12

ACCESSORIES

14

APPAREL

15

R1 AUDIO

18

R1 TOWER SPEAKERS

19

R1 SPEAKERS

20

R1 SUBWOOFERS

21

R1 AMPLIFIERS

22

R1 PACKAGES

23

SPEAKER DIMENSIONS

24

AMPLIFIER DIMENSIONS

26



# PASSION

*OUR EXCITEMENT FOR THE MOMENT THE  
THROTTLE DROPS HAS FOUND A NEW  
FRONTIER TO BRING YOU **ROSWELL OFFROAD**.  
JOIN US ON A JOURNEY OF INNOVATION THAT  
BEGINS WITH THE WAY YOU EXPERIENCE  
SOUND, TO POWER A VEHICLE OF DISCOVERY  
FUELED BY PURE PASSION.*



**ROSWELL.**  
**OFFROAD**











# OFFROAD FIREFLY 6.5" CAGE SPEAKER

Communicate intensity in moments consumed by sound with light. **Roswell Offroad Firefly 6.5" Cage Speakers** create a visual connection to a world ruled by revolutions per minute with patented RGB light permeable speaker housings. Experience clarity with purpose-built audio designed to withstand the elements and keep you in yours.



## FIREFLY 6.5" CAGE SPEAKERS

C960-22020 (Anthracite Grille)

- **Power:** 60W RMS | 120W PEAK
- **Speaker:** 6.5" component-style



## SPECIFICATIONS

**Continuous Power (RMS):** 60 Watts

**Peak Power:** 120 Watts

**Sensitivity:** 87 dB @ 1W/1M

**Freq. Response (+/- 3 dB):** 69Hz - 20 kHz

**Impedance:** 4Ω



**Industry First:** Patented RGB Illuminated Speaker Housing to create your desired visual atmosphere

**Machined billet** Roswell 360 Adjustable Speaker Clamps

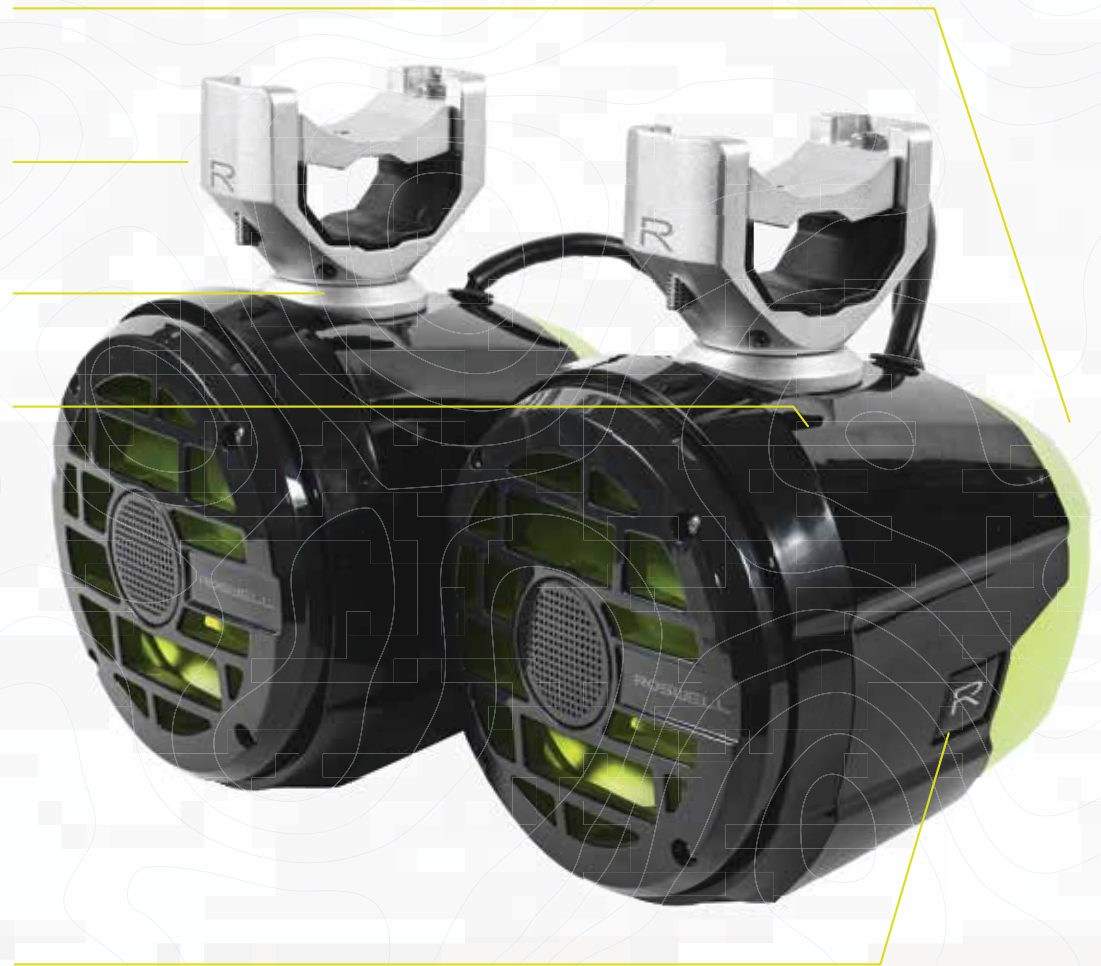
**Rotatable speaker orientation** for consistent visual alignment

**Deutsch Wiring Harness** included for water-tight connection

**Klippel® tested and certified** to guarantee acoustic performance

**Reversible Logo badge** to maintain the high quality aesthetic no matter the installation orientation

**\*Optional Surface Mount Option with 360 Flat Speaker Adapter C920-20025**



## DIMENSIONS

**Total Width:** 7.61 in | 19.33 cm

**Total Depth:** 7.11 in | 18.06 cm

**Hanging Distance:** 8 in | 20.32 cm  
(clamp center to lowest point)



# OFFROAD AMPLIFIERS

Featuring 500 watts of force via a single channel of sound, the **Roswell SD 500.1 Compact OFFROAD Amplifier** provides purpose built power for your subwoofer. IP66 rated to keep cranking in extreme conditions; crossover controls, fully conformal-coated PCB's, and differential RCA inputs deliver an audio environment where clarity is king.

## OFFROAD SD 500.1 COMPACT AMPLIFIER C960-21006

- Compact Design
- IP66 rated
- Conformal coated PCBs
- Switchable Differential RCA inputs
- RCA Line Out Passthrough
- Standard potentiometers
- 18 dB/oct Crossover Slope
- LPF/FLAT/HPF
- 8 AWG power/ground
- 16 AWG remote wire
- 12 AWG speaker wires



## SPECIFICATIONS

Continuous Power (RMS)	1Ω: 750W x 1 2Ω: 500W x 1 4Ω: 300W x 1
Inputs	1 pr RCA USB (with charging)
Input Sensitivity	0.2V-10V
HPF (High Pass Filter)	30-300Hz
LPF (Low Pass Filter)	30-300Hz Subsonic 10-55Hz
Bass EQ	0-18dB @ 45Hz

## DIMENSIONS

H x W x L (Inches): 1.7in x 4.6in x 10in

H x W x L (Centimeters): 4.3cm x 11.8cm x 25.3 cm





The Roswell **SD 600.4 Compact OFFROAD Amplifier** was built for a beating; IP66 rated to withstand the harshest conditions and power your audio experience anywhere. Fully conformal-coated PCB's, crossover controls, and differential RCA inputs for maximum noise rejection keep you firing on four channels to configure your ideal sound system.

OFFROAD SD 600.4 COMPACT  
AMPLIFIER  
C960-21005

- Compact Design
- IP66 rated
- Conformal coated PCBs
- Switchable Differential RCA inputs
- RCA Line Out Passthrough
- Standard potentiometers
- 12 dB/oct Crossover Slopes
- LPF/FLAT/HPF
- 8 AWG power/ground
- 16 AWG remote wire
- 16 AWG speaker wires



SPECIFICATIONS

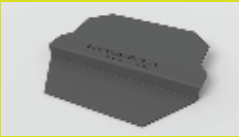
Continuous Power (RMS)	2Ω: 150W x 4 4Ω: 100W x 4 4Ω: 300W x 2
Inputs	2 pr RCA 2CH/4CH USB (With Charging)
Input Sensitivity	0.2V-10V
HPF (High Pass Filter)	30-300Hz
LPF (Low Pass Filter)	30-300Hz Subsonic (auto @ 30Hz in LPF)

DIMENSIONS

H x W x L (Inches): 1.7in x 4.6in x 10in  
H x W x L (Centimeters): 4.3cm x 11.8cm x 25.3 cm

OFFROAD AMPLIFIER RACK

- C960-22035
- Versatile Mounting Location for two Roswell OFFROAD amplifiers
  - RGB Back-lit Roswell OFFROAD logo
  - Stainless Steel Hardware



# DIGITAL MEDIA RECEIVERS

## ROSWELL OFFROAD DIGITAL MEDIA RECEIVER

**C960-22010** (Digital Media Receiver)

**P720-23130** (Digital Media Cover)

Master your moments with the Roswell Digital Media Receiver featuring bluetooth connectivity, AM/FM Radio, and USB/Aux inputs. IP66 rated for excellent water resistance, this versatile sound solution commands your arsenal of audio in harsh offroad environments.

- Built-in bluetooth
- 3 in full color display
- RGB Backlit Keypad
- AM/FM | USB/Aux inputs
- 5 Band equalizer
- 2V RMS RCA Preamp outputs
- Internal Amplifier: 50 Watts x 4
- **4 Zones** (3 full range + 1 subzone with adjustable low pass filter)
- **IP66 rated** for excellent water resistance (when properly installed)
- Protective silicon cover included
- Accepts Video input



## ROSWELL OFFROAD DIGITAL MEDIA WIRED REMOTE

**C960-21015**

The Roswell Digital Media Wired Remote delivers convenient control of your media receiver in a secondary location on your ATV. Featuring a compact design and IP66 rating for excellent water resistance, mount it anywhere you want to DJ from a distance.

- **IP66 rated** for excellent water resistance (when properly installed)
- Backlit LCD Display
- Allows source switching and zone control
- Single Wire Hookup for easy installation
- Ideal for mounting near any location where stereo control is desired



## RGB REMOTE AND CONTROLLER

**C920-1620**

- RF Control (requires 2 AAA batteries)
- 15 music-responsive LED modes
- Conformally coated PCB's for marine durability
- Powers up to 215 @ 12V or up to 430 watts @ 24V of RGB LED's
- 20 standard LED modes



## CYBOX C920-20130

Roswell CYBOX is a Bluetooth audio receiver that allows you to stream music to your stereo system from any Bluetooth enabled wireless device. Cybox uses AptX® technology, A2DP and AVRCP profiles optimized for real-time audio connection up to 20 feet away. A compact and durable design makes Cybox a perfect fit for use in marine and off-road applications.

- **IP67 rated** for excellent resistance to water and harsh outdoor environments
- Bluetooth 4.1
- AptX HD Streaming
- High resolution sound quality
- Device memory with auto-connect feature
- Built-in line driver for 2.2V RCA Output to reduce potential noise in the system
- Compact size for convenient mounting



# SPEAKERS & SUBWOOFERS

## R SERIES 7.7" SPEAKER

**C920-1912** (Anthracite Grille)

- **Power:** 80W RMS | 160W PEAK
- **Speaker:** 7.7" component-style
- Integrated RGB LEDs backlight the cone to create your desired visual atmosphere
- Klippel® tested and certified to guarantee acoustic performance
- Injection-molded plastic with UV inhibitors for marine durability
- Deutsch wiring harness included for water-tight connection
- Concealed integrated 6dB/oct crossover network
- **Excellent Marine Durability**



## R1 10" SUBWOOFER

**C920-1802** (Anthracite Grille)

- **Power:** 250W RMS | 500W PEAK
- Integrated RGB LED backlit grille helps to create your desired visual atmosphere
- Press fit inserts hide installation hardware which provides a clean finished look
- Klippel® tested and certified to guarantee acoustic performance
- Klippel® optimized motor structure for maximum power handling and sound quality
- Custom machined wire terminals allow for rock-solid wire connections
- **Extreme salt and UV resistance**



## R SERIES 6.5" SPEAKER

**C920-1902** (Anthracite Grille)

- **Power:** 60W RMS | 120W PEAK
- **Speaker:** 6.5" component-style
- Integrated RGB LEDs backlight the cone to create your desired visual atmosphere
- Klippel® tested and certified to guarantee acoustic performance
- Injection-molded plastic with UV inhibitors for marine durability
- Deutsch wiring harness included for water-tight connection
- Concealed integrated 6dB/oct crossover network
- **Excellent Marine Durability**



## RMA 10" SUBWOOFER

**C920-1801** (Black Grille)

- **Power:** 250W RMS | 500W PEAK
- Klippel® tested and certified to guarantee acoustic performance
- Klippel® optimized motor structure for maximum power handling and sound quality
- Custom machined wire terminals allow for rock-solid wire connections
- **Extreme salt and UV resistance**



## R1 1" TWEETERS

**C960-22030**

- **Power:** 50W RMS | 100W PEAK
- 316 Stainless Steel mesh grille
- Inline 12 dB/oct crossover
- Can be angled up to 10° within mounting cup
- **Extreme salt and UV resistance**



## RMA 12" SUBWOOFER

**C920-1811** (Black Grille)

- **Power:** 500W RMS | 1,000W PEAK
- Dual 3" voice coils
- Dual spider ensures linear excursion
- Integrated impedance switch allows you to easily select series or parallel voice coil configurations.
- Klippel® tested and certified to guarantee acoustic performance
- Klippel® optimized motor structure for maximum power handling and sound quality
- Custom machined wire terminals allow for rock-solid wire connections
- **Extreme salt and UV resistance**



# OFFROAD PACKAGES

COMPLETE OFFROAD SOUND SOLUTIONS

## FIREFLY 6.5" CAGE SPEAKER PACKAGE w/ RGB REMOTE

**C960-22040** (Anthracite Grille)

- (1) Pr. Firefly 6.5" Cage Speaker
- (1) Cybox Bluetooth Receiver
- (1) Dual Zone Volume Control
- (1) SD 600.4 Compact Amplifier
- (1) RGB Remote & Controller
- (2) 2M 2 Channel RCA cable



## OFFROAD 6.5" AUDIO PACKAGE w/RGB REMOTE

**C960-22045** (Anthracite Grille)

- (2) Pr. Offroad 6.5" Speakers
- (1) Cybox Bluetooth Receiver
- (1) Dual Zone Volume Control
- (1) SD 600.4 Compact Amplifier
- (1) RGB Remote & Controller
- (2) 2M 2 Channel RCA cable



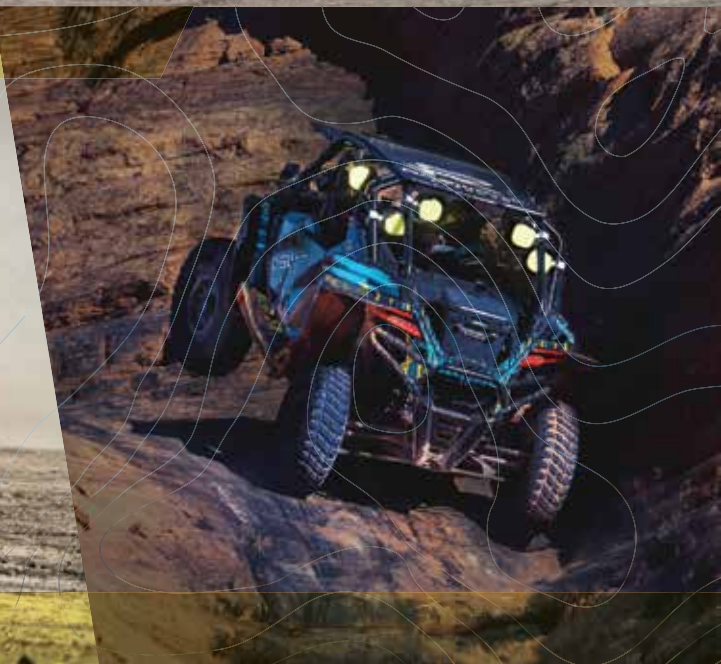
## R1 10" OFFROAD SUBWOOFER PACKAGE

**C960-22050** (Anthracite Grille)

- (1) R1 10" Subwoofer
- (1) SD 500.1 Compact Amplifier



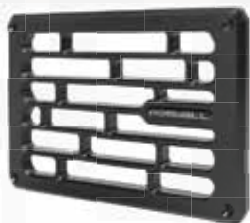






# ACCESSORIES

A NEW LEVEL OF VERSATILITY IN YOUR ARSENAL OF AUDIO



## COMPARTMENT VENT C920-20211

- Made from marine grade materials
- Simple installation



## DUAL ZONE VOLUME CONTROL C920-0300

- Independent volume control for 2 zones
- Simple installation
- Dual logarithmic pots for intuitive response
- Connects with 6 nickel-plated female RCA connectors
- Twisted-pair cable for noise rejection



## DISTRIBUTION BLOCK 1-IN-2 OUT C720-0540 (Fused) C720-0541 (Ground)

- (1) 1/0 input with 4 AWG reducer
- (2) 4 AWG outputs with 8 AWG reducers
- High-impact plastic base and cover



## DISTRIBUTION BLOCK 3-IN-4 OUT C720-0542 (Fused) C720-0543 (Ground)

- (3) 1/0 inputs with 4 AWG reducers
- (4) 4 AWG outputs with 8 AWG reducers
- High-impact plastic base and cover



## RCA CABLES & ADAPTERS

- C920-0325** (5M 6-Channel RCA Cable)
- B720-0320** (.5M 2 Channel RCA Cable)
- B720-0321** (1M 2 Channel RCA Cable)
- B720-0323** (5M 2 Channel RCA Cable)
- B720-0327** (1M to 2F Y Adaptor)
- B720-0328** (1F to 2M Y Adaptor)

## AMP WIRING KIT C920-0033



## WHAT'S IN THE BOX:

- (1 ea) 1 In 2 Out Fused Distribution Block
- (1 ea) 1 In 2 Out Ground Distribution Block
- (1 ea) Mini ANL Single Fuse Holder
- (2 ea) 4 AWG Ring Terminal [3/8 in Hole]
- (15 ft) 4 AWG Power Wire
- (15 ft) 4 AWG Ground Wire
- (15 ft) 16 AWG Blue Wire
- (2 ea) 2-Meter 2-Channel RCA Cable
- (1 pr) RCA Y-Splitter (1M to 2F)
- (1 pr) RCA Y-Splitter (1F to 2M)
- (1 ea) 50 Amp Mini ANL Fuse
- (2 ea) 60 Amp Mini ANL Fuse
- (1 ea) 100 Amp Mini ANL Fuse
- (1 ea) 200 Amp AFD Fuse
- (12 ea) 4 in Cable Tie
- (10 ea) #8 x 1/2 in PAN PHIL SS



# APPAREL

PROJECT YOUR PASSION FOR THE LIFESTYLE WITH  
GEAR FROM ROSWELL OFFROAD



FRONT

BACK

## ROSWELL OFFROAD SPLASH TEE

Available online at [Roswelloffroad.com](https://Roswelloffroad.com)



## ROSWELL OFFROAD TRUCKER HAT

Available online at [Roswelloffroad.com](https://Roswelloffroad.com)



## ROSWELL OFFROAD BLACK OPS HOODIE

Available online at [Roswelloffroad.com](https://Roswelloffroad.com)



FRONT

BACK

## ROSWELL OFFROAD MOTO1 PERFORMANCE LONGSLEEVE TEE

Available online at [Roswelloffroad.com](https://Roswelloffroad.com)



FRONT

BACK

## ROSWELL OFFROAD LOGO UV LONGSLEEVE TEE

Available online at [Roswelloffroad.com](https://Roswelloffroad.com)







**ROSWELL**  
OFFROAD



# WHERE IMAGINATION MEETS SOUND

Revolutionizing the industry with a signature sound engineered for perfection on the water, you will find the [Roswell R1 Audio line](#) celebrated by enthusiasts and the world's top boat manufacturers in applications where unmatched clarity, power, durability, and style is demanded.

Evolving beyond sound alone to define a culture of acoustic perfection, it has become a catalyst for new experiences.

The relentless pursuit of a combined passion for music and being on the water, the Roswell R1 Audio line is developed without boundaries, to create a category all its own and take you to a place where imagination meets sound.





# R1 PRO TOWER SPEAKERS

Discover a new age of audio with the revolutionary, patented **Roswell R1 Pro Tower Speakers**. Featuring the world's first RGB LED light-permeable speaker housing, this award-winning innovation consumes your senses with unmatched acoustic clarity in a place where imagination meets sound. The R1 Pro is a mission accomplished in developing the flagship of the R1 Audio line to introduce an entirely new listening experience on the water.

**Industry First:** Patented integrated RGB LED illuminates speaker and translucent housing to create your desired visual atmosphere

**Machined billet** Roswell 360° 3 in Universal Clamp with 1.90 in, 2.375 in and 3 in adapters

**Deutsch Wiring Harness** included for water-tight connection and easy installation

**Side-mounted 1 in Compression Tweeter** with integrated protection circuit

**Klippel® tested and certified** to guarantee acoustic performance



## SPECIFICATIONS

<b>Continuous Power (RMS):</b>	200 Watts
<b>Peak Power:</b>	400 Watts
<b>Woofer Sensitivity:</b>	95 dB @ 1W/1M
<b>Tweeter Sensitivity:</b>	103 dB @ 1W/1M
<b>Freq. Response (+/- 3 dB):</b>	60Hz - 20 kHz
<b>Impedance:</b>	4Ω

## DIMENSIONS

<b>Nominal Speaker Diameter:</b>	8 in   20.32 cm
<b>Nominal Tweeter Diameter:</b>	1 in   2.54 cm
<b>Total Width:</b>	15.48 in   39.32 cm
<b>Total Depth:</b>	13.35 in   33.91 cm
<b>Hanging Distance:</b> (clamp center to lowest point)	12.25 in   31.12 cm

# R1 MARINE SPEAKERS

CONSUME YOUR SENSES

## R1 Tower Speakers



### R1 Pro Tower Speaker

**C920-1910W** (White Grille)  
**C920-1910** (Black Grille)

- Power: 200W RMS | 400W PEAK
- Speaker: R1 Pro component-style



### R1 8" Tower Speaker

**C920-1710** (White Grille)  
**C920-1711** (Black Grille)

- Power: 100W RMS | 200W PEAK
- Speaker: R1 component-style



### R1 VAMP SPINS

**C920-1821** (6.5" x 6.5" Black Grille)  
**C920-1823** (8" x 6.5" Black Grille)

- Power: 160W RMS | 320W PEAK
- Speaker: R1 component-style



### R1 PRO TOWER SPEAKER COVERS

**C920-21001**

- UV-Stable neoprene material
- Anti-chafing velcro clasp
- Trailerable
- Machine washable



### R1 8" TOWER SPEAKER COVERS

**C920-21002**

- UV-Stable neoprene material
- Anti-chafing velcro clasp
- Trailerable
- Machine washable

## R1 Marine Speakers



### R1 8" MARINE SPEAKERS

**C920-1610** (White Grille)  
**C920-1611** (Black Grille)

- Power: 100W RMS | 200W PEAK
- Speaker: R1 component-style



### R1 7.7" MARINE SPEAKERS

**C920-21140** (White Grille)  
**C920-21145** (Black Grille)

- Power: 90W RMS | 180W PEAK
- Speaker: R1 component-style



### R1 6.5" MARINE SPEAKERS

**C920-1600** (White Grille)  
**C920-1601** (Black Grille)

- Power: 80W RMS | 160W PEAK
- Speaker: R1 component-style

## R1 Specifications

- Integrated RGB LED backlit grille helps to create your desired visual atmosphere
- Klippel® tested and certified to guarantee acoustic performance
- Deutsch wiring harness included for water-tight connection
- Coaxially mounted 1in silk dome tweeter
- Concealed integrated 12 dB/oct crossover network
- Locking trim ring conceals all mounting hardware
- **2-Year Warranty**
- **Extreme saltwater and UV resistance**



# R1 MARINE SUBWOOFERS

RESONATING YOUR CORE

## R1 Subwoofers



R1 12"  
C920-1810 (White Grille)

- **Power:** 500W RMS | 1,000W PEAK
- Integrated RGB LED backlit grille helps to create your desired visual atmosphere
- Press fit inserts hide installation hardware providing a clean finished look
- Dual 3 in voice coils
- Dual spider ensures linear excursion
- Integrated impedance switch allows you to easily select series or parallel voice coil configurations.
- Klippel® tested and certified to guarantee acoustic performance
- Klippel® optimized motor structure for maximum power handling and sound quality
- Custom machined wire terminals allow for rock-solid wire connections
- **Extreme salt and UV resistance**



R1 10"  
C920-1800 (White Grille)  
C920-1802 (Anthracite Grille)

- **Power:** 250W RMS | 500W PEAK
- Integrated RGB LED backlit grille helps to create your desired visual atmosphere
- Press fit inserts hide installation hardware which provides a clean finished look
- Klippel® tested and certified to guarantee acoustic performance
- Klippel® optimized motor structure for maximum power handling and sound quality
- Custom machined wire terminals allow for rock-solid wire connections
- **Extreme salt and UV resistance**



R1 10" Sub Enclosure  
C820-1805

- Made from marine grade materials
- Simple installation
- **Dimensions:** 13.5"W x 11.5"D x 18"H
- **Volume:** 1.1 ft<sup>3</sup>
- **Port Frequency:** 43 Hz



R1 12" Sub Enclosure  
C820-1815

- Made from marine grade materials
- Simple installation
- **Dimensions:** 16"W x 12"D x 20"H
- **Volume:** 1.3 ft<sup>3</sup>
- **Port Frequency:** 41 Hz

# R1 STACKABLE MARINE AMPLIFIERS

INNOVATIVE POWER FOR THE PINNACLE OF MARINE SOUND

## R1 900.6

**C920-1836SD**

- Ch 1-6 calibrated crossover: **(FULL/HPF/LPF)**
- Bridgeable 6-channel design
- 2 Ohm Stable at 165 watts per channel
- Switchable Differential RCA inputs minimize interference and induced noise
- Conformal-coated PCBs and Nickel-plated wire terminals



## R1 650.4

**C920-1834SD**

- Ch 1-4 calibrated crossover: **(FULL/HPF/LPF)**
- Bridgeable 4-channel design
- 2 Ohm Stable at 165 watts per channel
- Switchable Differential RCA inputs minimize interference and induced noise
- Conformal-coated PCBs and Nickel-plated wire terminals



## R1 550.2

**C920-1832SD**

- Ch 1-2 calibrated crossover: **(FULL/HPF/LPF) + Subsonic**
- 2 Ohm Stable at 275 watts per channel
- Switchable differential RCA inputs minimize interference and induced noise
- Phase control
- Conformal-coated PCBs and Nickel-plated wire terminals



## R1 1000.1

**C920-1831SD**

- Low-pass and subsonic filters (12 dB/OCT)
- Bass boost control (0-18 dB @ 45Hz)
- Full 0-180° phase control
- Switchable Differential RCA inputs minimize interference and induced noise
- Conformal-coated PCBs and Nickel-plated wire terminals



## R1 AMP SPACERS

**C920-1830**

Roswell R1 Amp Spacers serve up the perfect stack as an integrated solution for multi-amp installation. Mix it up with Roswell R1 amplifiers to create your masterpiece of sound and make the most out of tight spaces with this secure, stylish mounting option.





# R1 AUDIO PACKAGES

YOUR COMPLETE ROSWELL SOUND SOLUTION



## MARINE AUDIO PACKAGE

**C920-23120** (White Grille)

**C920-23121** (Black Grille)

- (1) Pr. R1 Pro Tower Speakers
- (1) R1 550.2 Amplifier
- (1) RGB Remote & Controller



## R1 6.5" MARINE AUDIO PACKAGE

**C920-2557** (Black Grille)

**C920-2556** (White Grille)

- (2) Pr. R1 6.5" Marine Speakers
- (1) R1 650.4 Amplifier
- (1) Cybox Bluetooth Receiver
- (1) RGB Remote & Controller
- (1) Dual Zone Volume Control
- (2) 2M 2 Channel RCA cable



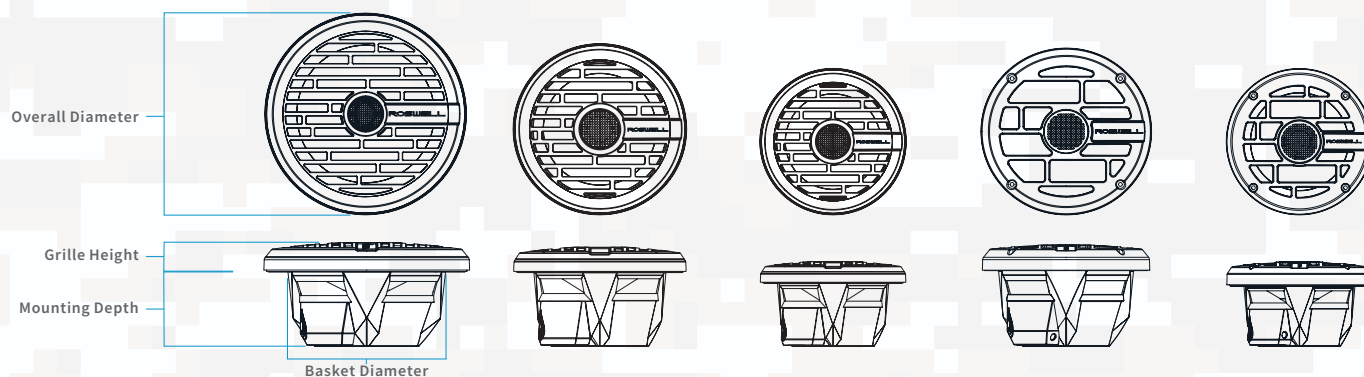
## R1 10" SUBWOOFER PACKAGE

**C920-2558** (White Grille)

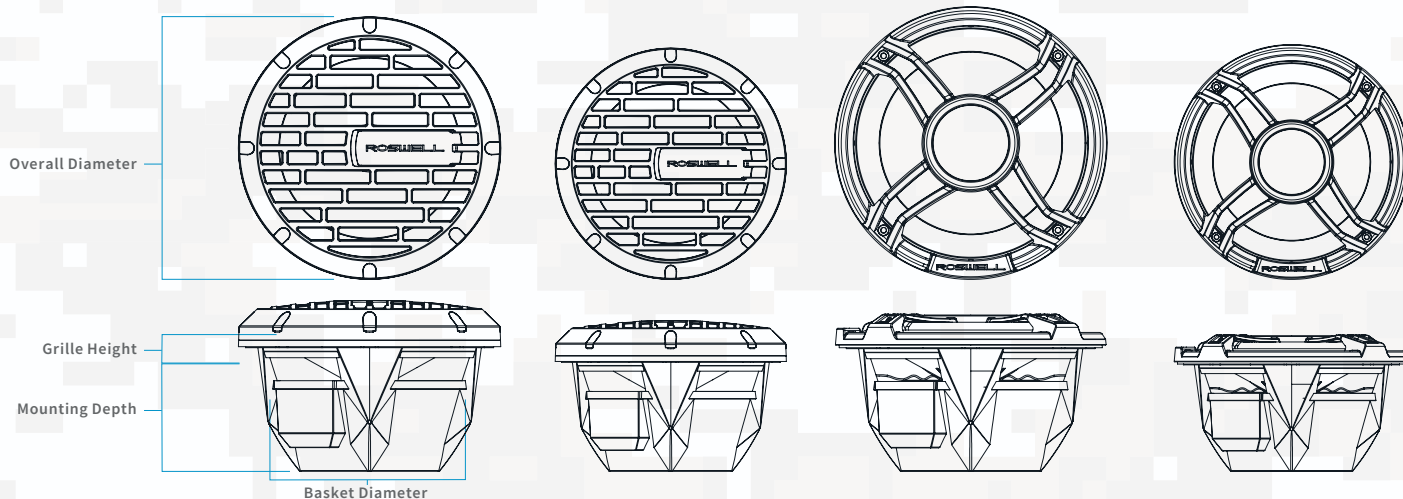
**C920-2559** (Anthracite Grille)

- (1) R1 10" Subwoofer
- (1) R1 550.2 Amplifier

# SPEAKER DIMENSIONS



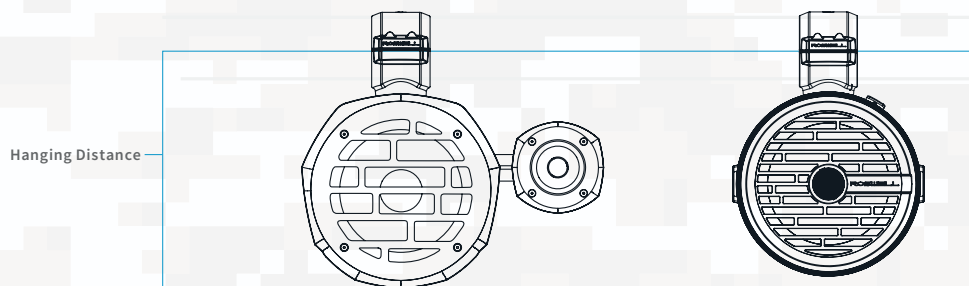
	R1 Speakers			R Speakers	
	R1 8"	R1 7"	R1 6.5"	7.7"	6.5"
Nominal Diameter	8 in 20.32 cm	7.7 in 19.6 cm	6.5 in 16.51 cm	7.7 in 19.56 cm	6.5 in 16.51 cm
Overall Diameter	9.21 in 23.4 cm	7.72 in 19.61 cm	6.81 in 17.3 cm	7.72 in 19.61 cm	6.75 in 17.15 cm
Basket Diameter	7.075 in 18.0 cm	6.22 in 15.80 cm	5.25 in 13.35 cm	6.26 in 15.9 cm	5.25 in 13.35 cm
Mounting Depth	3.325 in 8.45 cm	3.42 in 8.69 cm	3.00 in 7.60 cm	3.46 in 8.79 cm	3.00 in 7.60 cm
Grille Height	1.50 in 3.80 cm	1.32 in 3.35 cm	1.20 in 3.00 cm	1.22 in 3.10 cm	1.07 in 2.72 cm



	R1 Subwoofers		RMA Subwoofers	
	R1 12"	R1 10"	RMA 12"	RMA 10"
Nominal Diameter	12 in 30.48 cm	10 in 25.4 cm	12 in 30.48 cm	10 in 25.4 cm
Overall Diameter	12.80 in 32.5 cm	10.85 in 27.5 cm	13.16 in 33.43 cm	11.16 in 28.35 cm
Basket Diameter	11.20 in 28.5 cm	9.25 in 23.5 cm	11.20 in 28.5 cm	9.25 in 23.5 cm
Mounting Depth	6.38 in 16.2 cm	5.08 in 12.9 cm	6.38 in 16.2 cm	5.08 in 12.9 cm
Grille Height	2.12 in 5.40 cm	1.94 in 4.90 cm	1.56 in 4.03 cm	1.43 in 3.64 cm

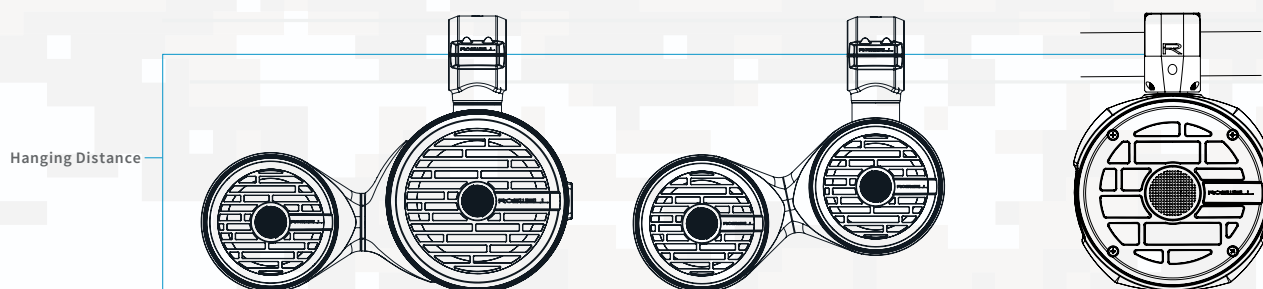


# TOWER & CAGE SPEAKER DIMENSIONS



**Tower Speakers**

	R1 Pro	R1 8"
Nominal Diameter	<b>Woofer:</b> 8 in (20.32 cm) <b>Tweeter:</b> 1 in (2.54 cm)	8 in 20.32 cm
Total Width	15.48 in 39.32 cm	9.875 in 25.1 cm
Total Depth	13.35 in 33.91 cm	13.575 in 34.5 cm
Hanging Distance (From center to lowest point)	12.25 in 31.12 cm	11.50 in 29.21 cm



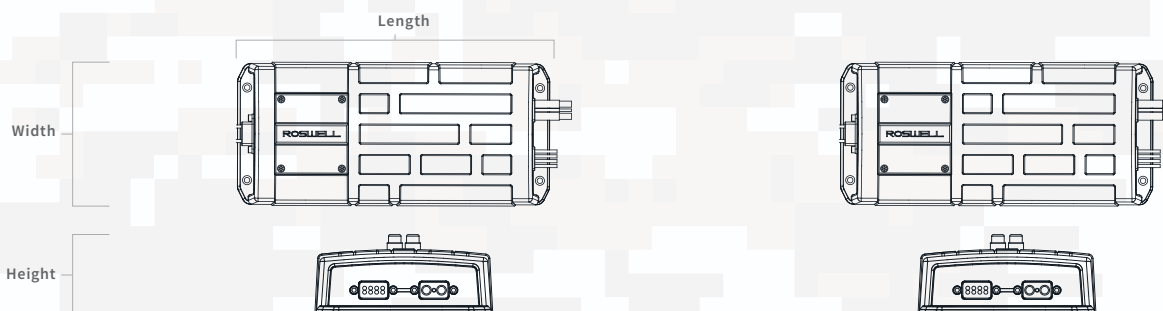
**Tower Speakers**

**Offroad Cage Speakers**

	8" x 6.5" R1 Vamp Spin	6.5" x 6.5" R1 Vamp Spin	6.5" Firefly Speaker
Nominal Diameter	<b>Mounted Speaker:</b> 8 in (20.32 cm) <b>Spin Speaker:</b> 6.5 in (16.51 cm)	<b>Mounted Speaker:</b> 6.5 in (16.51 cm) <b>Spin Speaker:</b> 6.5 in (16.51 cm)	<b>Mounted Speaker:</b> 6.5 in (16.51 cm) <b>Spin Speaker:</b> 6.5 in (16.51 cm)
Total Width	19.30 in 49.0 cm	16.40 in 41.64 cm	7.61 in 19.33 cm
Total Depth	13.575 in 34.5 cm	9.0625 in 23.02 cm	7.11 in 18.06 cm
Hanging Distance (From center to lowest point)	12.26 in 31.14 cm	12.57 in 31.93 cm	8.00 in 20.32 cm

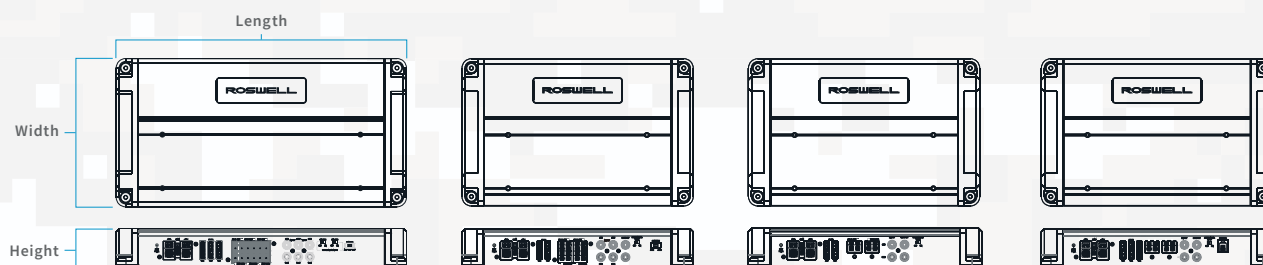
# AMPLIFIER DIMENSIONS

## Offroad Amplifiers



Offroad Amplifiers		
	SD 500.1	SD 600.4
H x W x L (Inches)	1.7 x 4.6 x 10	1.7 x 4.6 x 10
H x W x L (Centimeters)	4.3 x 11.8 x 25.3	4.3 x 11.8 x 25.3

## RI Marine Amplifiers



Marine Amplifiers				
	R1 950.6	R1 650.4	R1 550.2	R1 1000.1
H x W x L (Inches)	1.90 x 7.0625 x 13.67	1.90 x 7.0625 x 11.125	1.90 x 7.0625 x 11.125	1.90 x 7.0625 x 11.125
H x W x L (Centimeters)	4.83 x 17.94 x 34.74	4.83 x 17.94 x 28.26	4.83 x 17.94 x 28.26	4.83 x 17.94 x 28.26







# ROSWELL<sup>LLC</sup>

## OFFROAD

roswelloffroad.com

### Committed to excellence in manufacturing for 25 years

The content in this catalog is current as from the publication date and supersedes all previous content for Roswell products. Every effort has been made to ensure the information in it is correct at the time of going to press, however, due to a policy of continuous development, Roswell Offroad reserves the right to modify any content or technical data without notice. Roswell and the Roswell logos are trademarks of Roswell U.S. LLC d/b/a Roswell Offroad. All other trademarks and trade names are the property of their respective holders. No part of this website or the Roswell trademarks may be reproduced in any form or by any means without the prior written permission of Roswell Offroad.



**ROSWELL U.S.A.**  
2900 Murrell Rd.  
Rockledge, FL 32955 | Tel. (321) 638-1331

**ROSWELL CANADA**  
11208 261st  
Acheson, Alberta T7X 6C7 | Tel. (780) 962-0868

**ROSWELL AUSTRALIA**  
6 Toorak Ave.  
Taren Point, NSW 2299 AU | Tel. +61-(2)-9525-1223

**EMAIL**  
[info@roswellglobal.com](mailto:info@roswellglobal.com)